



Finchampstead
Parish Council

Annual Gathering

7 March 2018

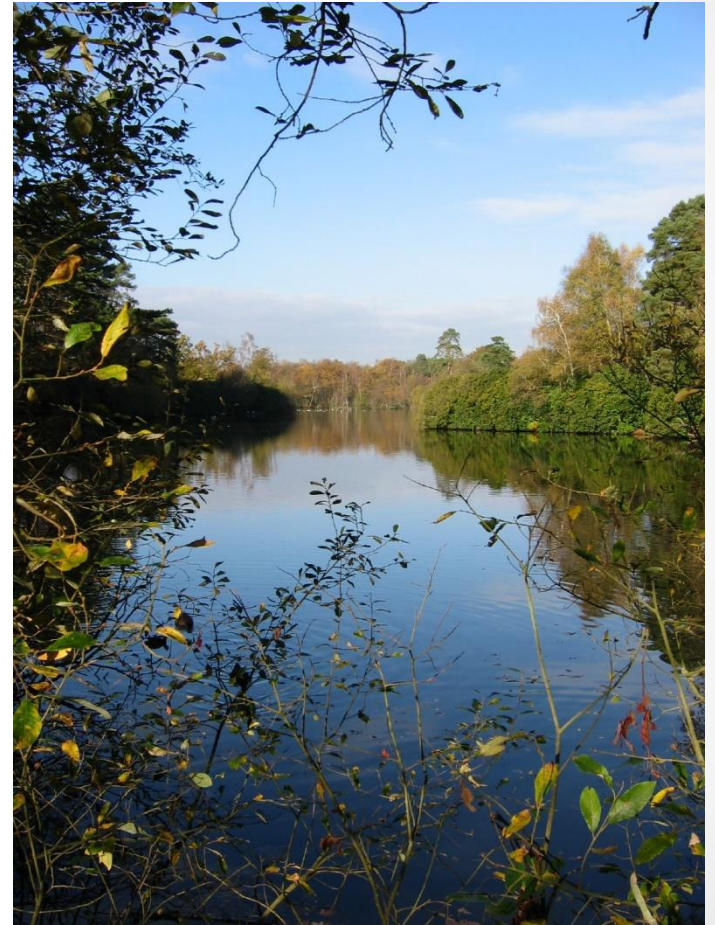
Amenities Committee

**Projects to enhance the local environment
and to support and promote local services**



Finchampstead
Parish Council

California Country Park



Community Defibrillators



**CARDIAC ARREST AND
DEFIBRILLATOR AWARENESS /
TRAINING SESSION**

**TUESDAY 27 MARCH 2017 AT 7PM AT THE
CALIFORNIA RATEPAYERS HALL,
FINCHAMPSTEAD ROAD RG40 3RL**



There are now 5 community accessible defibrillators in the Parish. Acting quickly when someone goes into cardiac arrest is vital, and a defibrillator can make the difference between life and death. These potentially life saving items of equipment are designed to be used by anyone without specific training, but some knowledge is always helpful.

**ALL ARE WELCOME BUT PLEASE LET US KNOW
IF YOU WOULD LIKE TO ATTEND**

0118 9088164 or clerk@finchampstead-pc.gov.uk

Telephone Box Book Swop



California Crossroads



Cleanliness

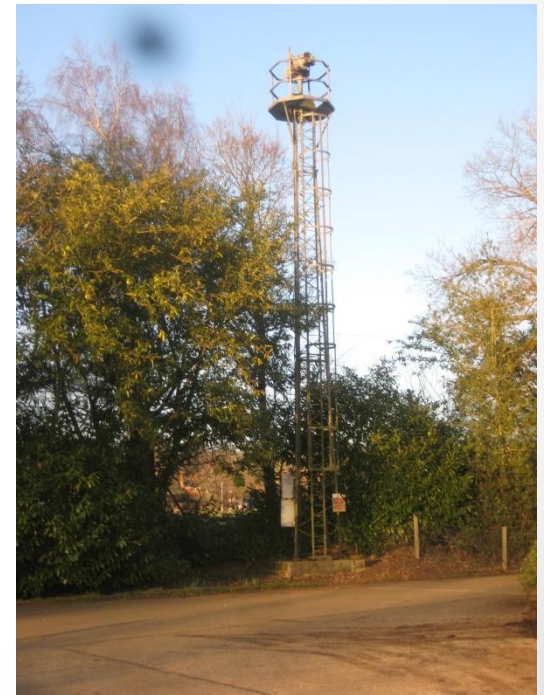


War Memorial

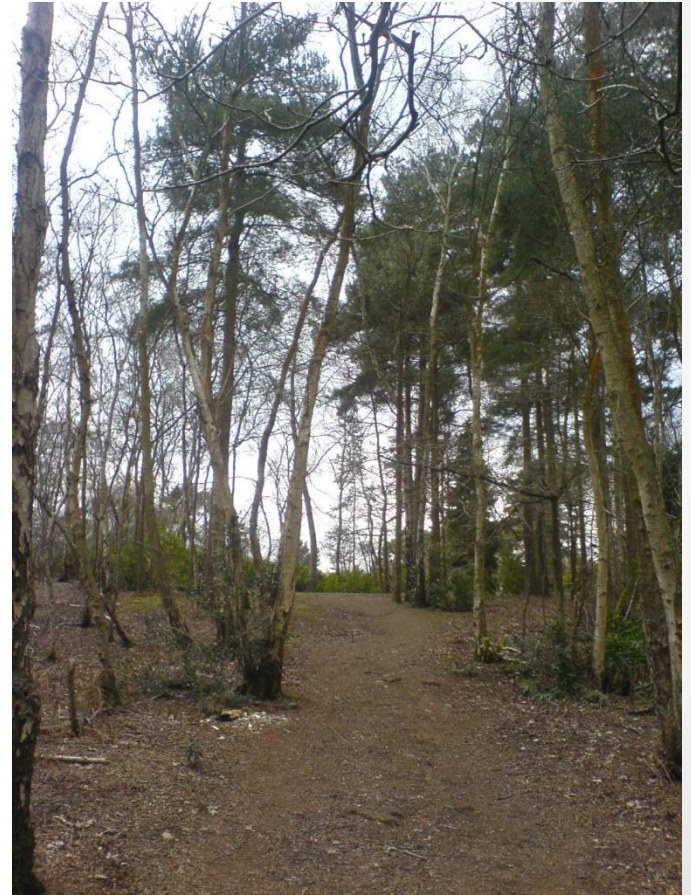


Some plans for 2018/19

Finchampstead Allotments



Warren Wood Bell Barrow



Centenary of World War I



Planning Committee

**Aims to safeguard the local environment
Considers and comments on all planning
applications and related matters**



Finchampstead
Parish Council

Our Work This Year



- **Considered over 180 development applications**
- **17 new Appeals**
- **66 new enforcement issues. 17 issues closed.**

Applications of Concern



- **Finchampstead Road, Wokingham**
- **Land adjacent to Sand Martins, Finchampstead Road**
- **Land off Longwater Road**
- **Land off Johnson Drive**
- **We continue to lobby central government**
- **We have issued information to residents**

WOKINGHAM BOROUGH

LOCAL PLAN

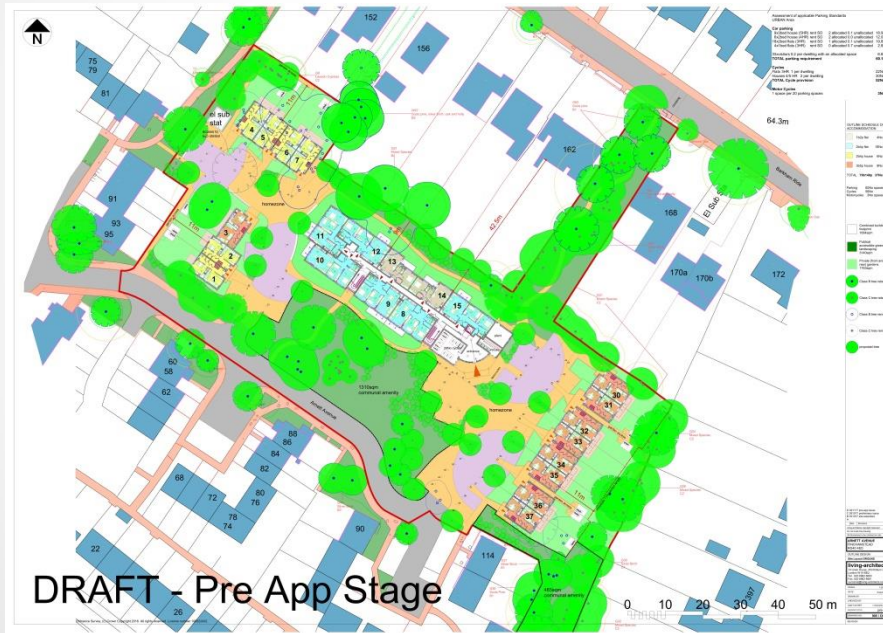
'Shaping our Future'

- The Plan is being updated for the period to 2026
- Part of this is the 'call for sites'
- We have reviewed and commented on all 44 sites put forward for Finchampstead



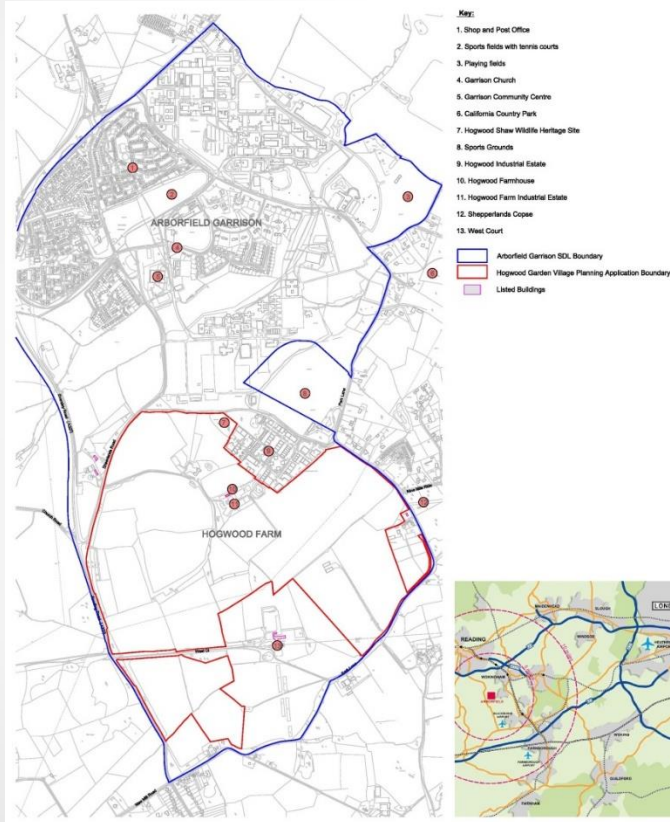
WOKINGHAM
BOROUGH COUNCIL

Gorse Ride Estate Regeneration



- Represented on the Steering group
- Phase 1 progressing - Cockayne Court
- Masterplanning commenced for main part of Estate
- Decision on future phases May 2018

Arborfield Strategic Development Location



- 140 homes built to date
- First homes in Finchampstead (Redrow Homes)
- Bohunt School in its second year
- Plans for Arborfield Green District Centre
- Legal & General to develop the southern part of the site – in Finchampstead

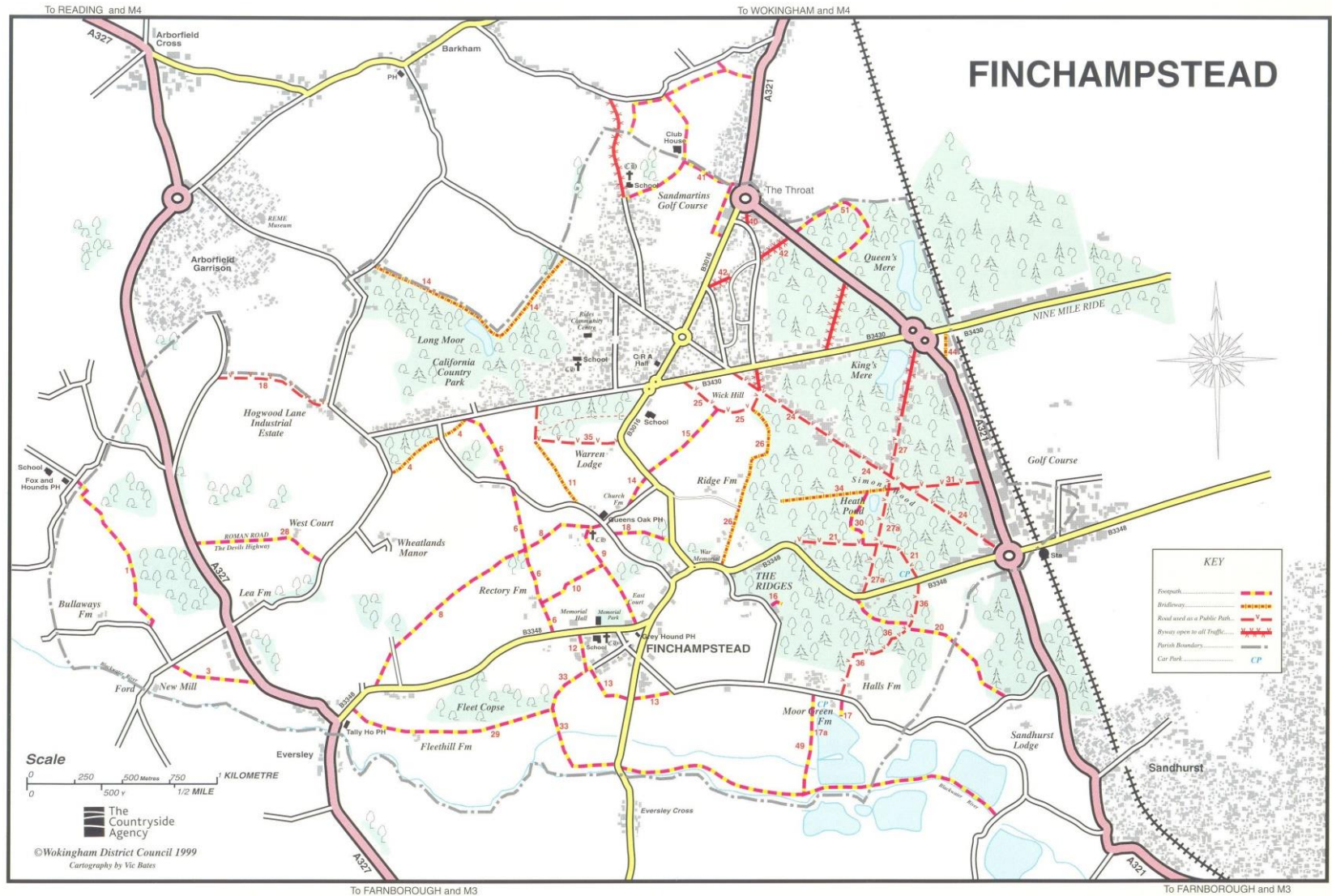
Rights of Way Committee

Aims to ensure that the local network of footpaths and bridleways is kept in good condition, well signed and as accessible as possible.



Finchampstead
Parish Council

Our 26 mile Network



A Partnership Approach

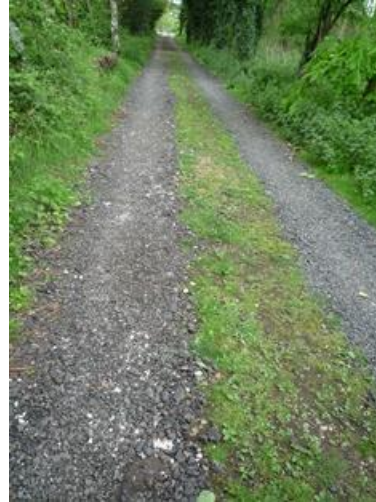


- The Highway Authority - WBC
- Parish Council Footpath Warden and activities
- The Ramblers
- Local landowners
- Allotment tenants
- The National Trust
- Blackwater Valley Countryside Partnership



Improvements and Maintenance

- **Footpath Warden regular maintenance and minor repairs**
- **Improvements to BP4
FP13
FP52**
- **BP26 surveyed and proposals put to WBC**



Network Improvements



- **The new Greenway**
- **Community Infrastructure Levy gives FPC greater involvement and influence**
- **Greenway extension**



Some plans for 2018/19

Forward Planning

- Consultation prioritises rights of way
- Sustainable transport
- Leisure, health and wellbeing
- Improve existing routes and create new ones



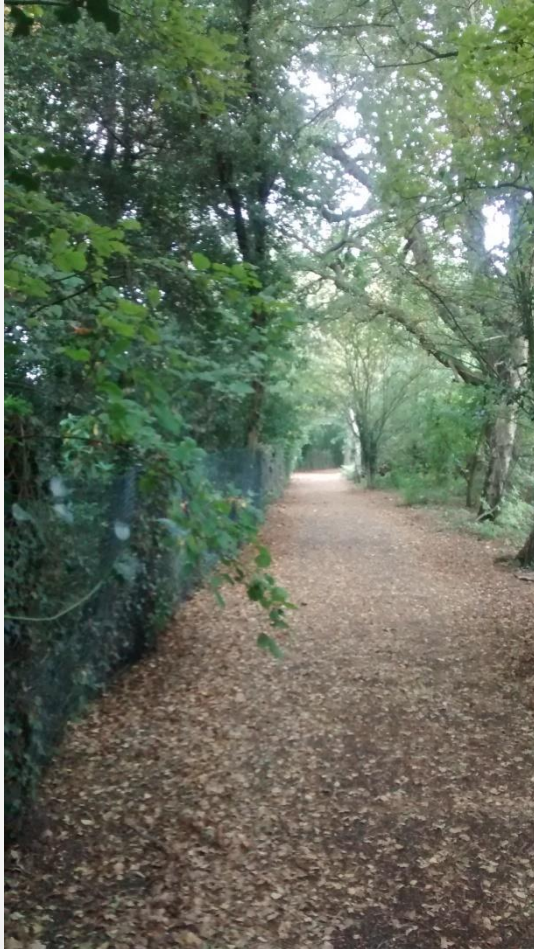
Path condition – tackling major problems



- Take bigger role
 - BP26 drainage issues
 - FP33 surfacing



Cycling and Horse Riding



- **Proposed Green Way network**
- **Shared use**
- **Seek additional new routes for cyclists and horse riders**
- **Promote existing cycle routes**



Circular Walks and Other Routes



- Promote Circular walks
- Future nature reserves at Manor Farm and Fleet Hill Farm with public rights of way



Roads & Road Safety Committee

**Aims to improve the local road network and
safety for users**



Finchampstead
Parish Council

Traffic Monitoring

SDR information

- 19 regular monitoring locations
- 14 ad-hoc locations
- Police require 7 days of data to be recognised
- Results invalidated by roadworks, weather & school holidays – leaves 39 possible runs/year



Traffic monitoring

SID information

- Location & time are targeted from SDR results
- All sessions run totally by volunteers – FPC, FinchNAG & local residents
- 1 hour session every week – averaging 21 reported vehicles/session in the last 12 months
- A letter is sent from the police to the vehicle keeper



Lamp Column Replacement



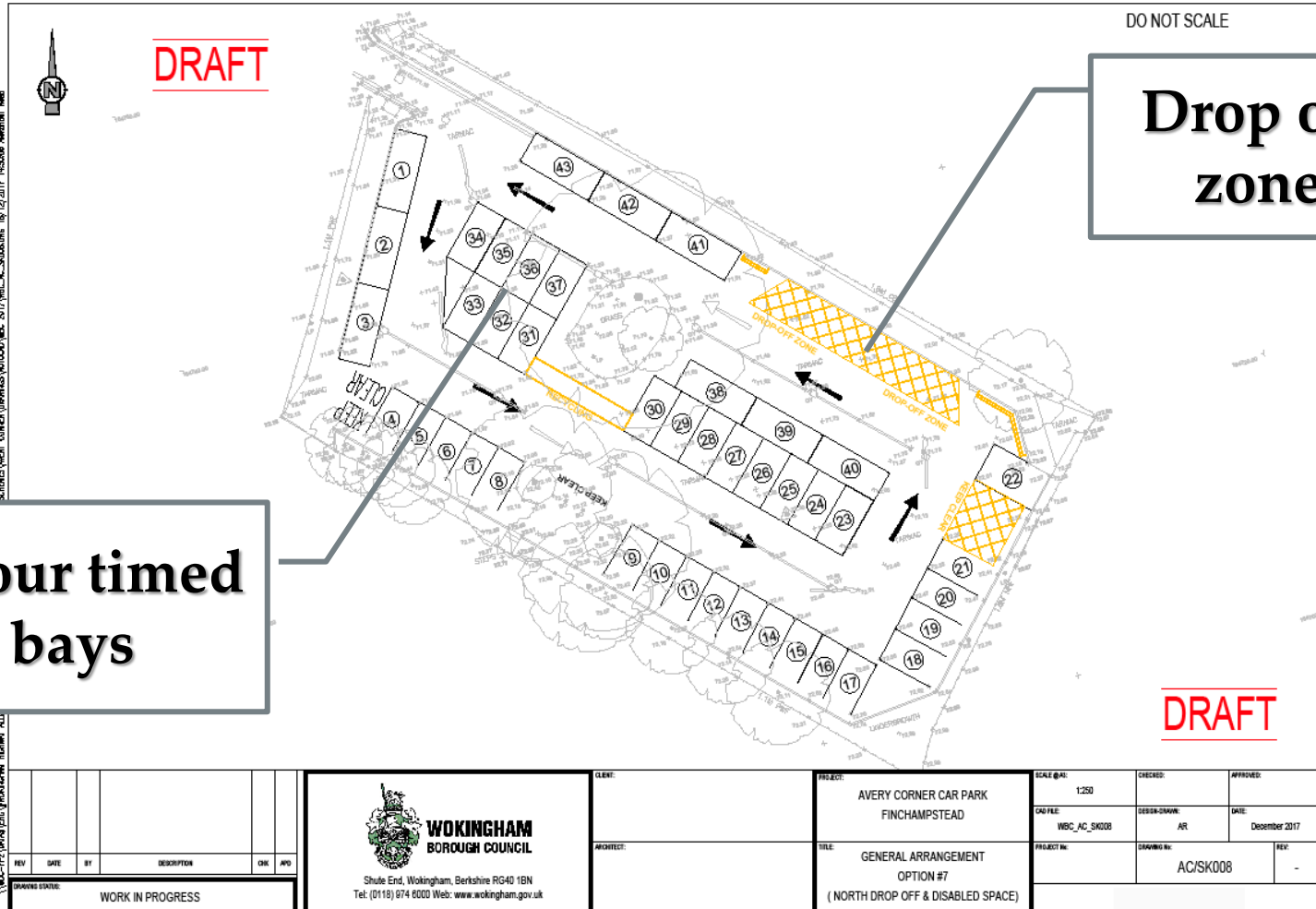
WBC Lamp Columns

- Replacement LED Lanterns
- 16,500 replaced in the whole Borough
- 70% of the cost provided by a DfT grant



Some plans for 2018/19

Avery Corner Car Park Improvements



Gateway Signs



Signs, Potholes & Footways



Additional Speedwatch Equipment

Post Mounted SID

- For short term deployment at problem locations
- 2 week runs per location



Finance & General Management Committee

**Responsible for budgeting, general
management, administration, financial
arrangements and development of the
Council**



Finchampstead
Parish Council

Responsibilities

- **Setting and monitoring the budget**
- **Annual return, internal and external audit**
- **Policies to comply with legislation and good practice**
- **Compliance with the general Data Protection Regulations 2018**
- **Staffing matters**

Assets and Risk Management

- **Assets include the War Memorial, seats and benches, bus stops, lamp columns, noticeboards, a telephone box and defibrillators.**
- **Risk management associated with the activities of the Council, for example Speed Indicator Device and volunteer tidy up sessions.**
- **Business continuity planning**

Grants and Donations



- **Organisations providing support and services**
- **Community Transport**
- **Local halls and churchyard**
- **Blackwater Valley partnership**
- **FBC Youth Work**
- **Schools Extra Curricular Activities**

Communications



- **E newsletters**
- **Website**
- **Facebook**
- **Events**
- **Annual Report**
- **Household consultation**

Community Infrastructure Levy



- FBC Centre play area repairs
- New Green Way
- Avery Corner Car Park



Funding Council Activities

- **Investment in Property Fund – making reserves work**
- **Reserves used to balance budget in 2016 and will be again in 2017**
- **2018 Precept must increase**
 - **We have for many years kept our Precept at the same level or increased by minimal amounts – in 2017 had by far the lowest increase of parishes over 1000 households – six increased by more than 8% and one by 20%**
 - **Currently Finchampstead has lowest Band D rate in Wokingham (except 2 very small parishes) - with proposed 2018 increase will still be in this position**
 - **At £2.49 per household this would not even buy a cappuccino anywhere in Wokingham**
- **But along with a small contribution from reserves it will enable us to fund the planned Council activities**

Future plans



- **Develop the new strategy**
- **Invest CIL funds**
- **New web site**
- **Extend the Allotments**
- **RoW improvements**
- **Further speed control equipment**
- **Parking management**
- **Maintain dialogue with Parishioners**



Finchampstead
Parish Council

Annual Gathering

7 March 2018