



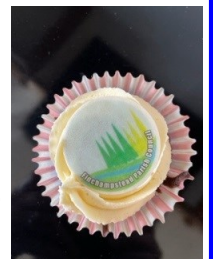
## An update on the Gorse Ride regeneration project

With site clearance and preparatory works underway on Wokingham Borough Council's Gorse Ride regeneration, local residents were able to meet the project team to find out how the scheme is progressing at an exhibition of the detailed designs, held in June.



The exhibition was also shared with the wider community at the Parish Council's Annual Gathering on 31 May. The team gave a presentation about some of the green features of the regeneration, which includes elements such as air source heat pumps, high levels of insulation and glazing, and plentiful electric vehicle charging points with the infrastructure to add more points in future.

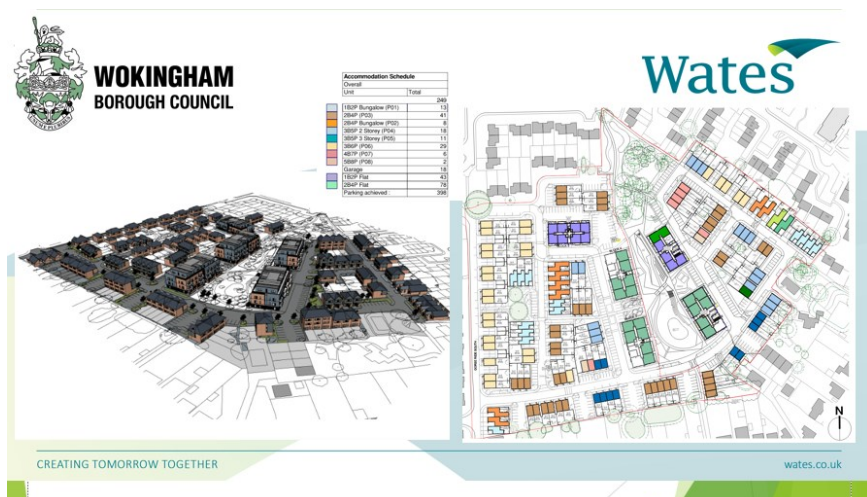
An amazing cake depicting one of the new homes was on display, created by Kerry Soper-Dyer along with delicious cup cakes for those attending to take home.



The first phase of the regeneration, including almost 50 new homes, was completed in 2021. The second phase includes the creation of 249 new homes, 74% of which will be affordable housing.



As well as these being greener low energy homes, meaning residents will need to spend far less on heating and running their homes, they are also designed to be flexible and adapt to changing lifestyles over the years, with a range of property types allowing residents to remain an active part of their community much longer than before.



## Moving forward

Work to clear and prepare the site continues, including pre-construction works such as archaeological surveys, ready for groundworks and foundation laying due to start in September.

The new roads and buildings on the site will be named on a floral theme, following a street naming competition. The pupils of class 6CB at Gorse Ride Junior School came up with the winning theme and received vouchers from Wates Construction. Well done everyone!

## The War Memorial relocation project

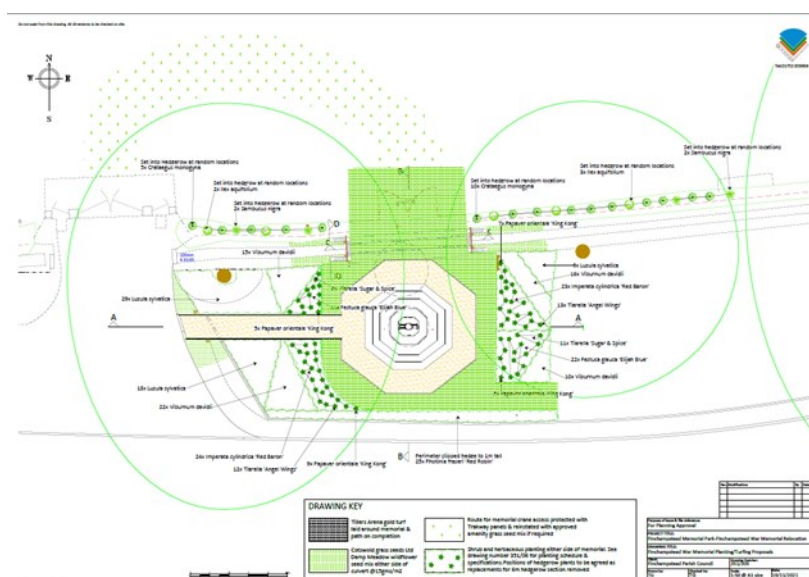
We are pleased to let you know that the War Memorial has been carefully and respectfully dismantled by expert stonemasons. No parts of the Memorial were damaged in the process. In the coming weeks it will be fully cleaned and restored before being re-erected in its new home adjacent to the Memorial Park, The Village.

Those passing will see material remaining on the site. In the 1970's the Memorial was found to be leaning and was dismantled, and concrete ballast foundations were added to stabilise the structure when it was re-erected. This concrete is what can be seen now - this will be removed shortly and the area will be reinstated.

The next stage of the project is works to the trees on the verge adjacent to the Memorial Park. This is underway and will be completed this week. The works are in accordance with proposals drawn up by professional arboriculturalists, and approved as part of the planning permission granted for the project.

Following the tree works the main contractor will be setting up their compound on site and the works to prepare the site for the Memorial will start. This includes constructing a base, setting out paths and creating a garden area.

The work will be completed and the Memorial re-erected in the Autumn.



Full details of the project can be found at the link below.

<https://www.finchampstead-pc.gov.uk/history/war-memorial/war-memorial-relocation>

The web page includes information on the outcome of the household consultation undertaken by the Parish Council in June 2021 which informed the Parish Council's decision to proceed with the project. It also includes links to the planning consents granted for the project.

There is also information on the future of the 'War Memorial junction' and how the Parish Council is working with Wokingham Borough Council, the Highway Authority, to move this project forward.





**One Front Door**, a service led by Citizens Advice Wokingham, can help residents find the support and advice they need on a range of different topics from energy costs to loneliness, mental health to welfare benefits and debt.

Call the team on 0808 278 795 for a confidential chat or use the form on the website [www.citizensadvicewokingham.org.uk](http://www.citizensadvicewokingham.org.uk)

## Volunteers needed

Since 1977 Citizens Advice has been here for people in our communities, across Wokingham Borough, to help find a way forward with their issues.

Throughout the pandemic, right from the beginning, we stepped up our work to support the huge increase in people who needed help. Last year we helped 126% more people than in 2018, and we helped people find debt solutions at a 538% increase in debt amount.

We have 59 active volunteers in our team, providing a variety of support from providing advice and information to admin support.

Due to the increasing number of people we're helping, we're in need of more volunteers .

You will receive full support and training. To find out more and register your interest visit [www.citizensadvicewokingham.org.uk/volunteer](http://www.citizensadvicewokingham.org.uk/volunteer) or email [admin@cawokingham.org.uk](mailto:admin@cawokingham.org.uk)



## Summer Cycle Trail - FBC Greenway to Observer Bridge, Arborfield Green

**Date:** Tuesday, 26 July to Sunday, 4 September

**Venue:** From the greenway starting at the FBC Centre to Observer Bridge, Arborfield Green via California Country Park

### How to take part

Looking for something to do as a family in the school holidays? Then why not have a go at our Summer Cycle Trail?

Please download the link with the route here:

<https://ridewithgps.com/routes/40158225>

Follow the trail to find eight posters with pictures of either sustainable forms of travel or ways to keep fit. Take a note of the red letters from the words on the eight posters. Once you've collected all the letters work out the word they spell and then send it to us at [myjourney@wokingham.gov.uk](mailto:myjourney@wokingham.gov.uk)

Anyone who sends us the correct answer will be entered into a prize draw with the chance of winning a prize kindly donated by ASDA.

**Happy Cycling!**





## About the Parish Council

Parish Councils are statutory bodies and are the first tier of local government, at the heart of the community. Finchampstead Parish Council is made up of 17 Councillors, supported by the Clerk, Deputy Clerk and Planning Committee Clerk. The Council also employs a Footpath Warden and two Litter Wardens, all working part time. The Parish Councillors are all volunteers, and the Council is not political.

Our activities fall into 3 main areas; representing the local community, working with partners to deliver services and provide facilities to meet local needs, and striving to improve the quality of life and community well being. We try and work with Wokingham Borough Council (WBC) wherever possible to bring benefits to the Finchampstead community, but are not accountable to the Borough Council in any way.

The Council meets monthly and has five committees which meet regularly, covering Amenities, Finance & General Management, Planning, Rights of Way, and Roads & Road Safety. We have several Sub Committees and Working Groups dealing with specific projects or activities and the Council also has representatives on a number of organisations from the Blackwater Valley Countryside Partnership to the FBC Advisory Board and the Gorse Ride Steering Group. Members of the public are always welcome to attend our Council and Committee meetings. For more details please visit our website [www.finchampstead-pc.gov.uk](http://www.finchampstead-pc.gov.uk)

You can see our **Annual Report for 2021/22** with a summary of our activities at <https://www.finchampstead-pc.gov.uk/projects-and-plans>

## Vacancy on the Parish Council



We have a vacancy on the Council. Parish Councils and Councillors make a massive difference to local people's quality of life. They are passionate about their communities and seek to make a change to help improve their residents' lives.

We are delighted to already have interest in our vacancy and plan to meet the candidates in September. If you are interested in joining our busy and enthusiastic team of Councillors please get in touch with Katy Dagnall, Parish Council Clerk, for an informal chat.

Telephone 118 9088164 or email [clerk@finchampstead-pc.gov.uk](mailto:clerk@finchampstead-pc.gov.uk)

## Thames Valley Police Museum open mornings

The Thames Valley Police Museum is open during the school summer holidays on Wednesday mornings between 10.00am – 12.00pm. You can pop along without making an appointment or paying a visitors fee.

The museum is based in the White House at The Thames Valley Police Training Centre in Sulhamstead, Nr Reading, Berkshire, RG7 4DX.

The Museum's collections include displays on the Great Train Robbery, Amelia Dyer, uniforms, equipment, medals and scenes of crimes evidence.

[www.thamesvalley.police.uk/police-forces/thames-valley-police/areas/au/about-us/thames-valley-police-museum/](http://www.thamesvalley.police.uk/police-forces/thames-valley-police/areas/au/about-us/thames-valley-police-museum/)



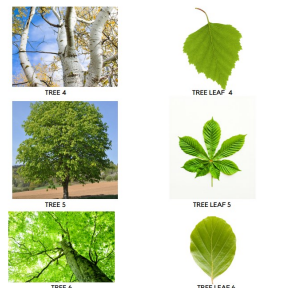
## Identify the Tree Competition



Looking for something to do with the children over the summer holidays? Then why not take part in a tree competition for a chance to win a £25 Decathlon voucher? Runners up will receive a My Journey goody bag.

Get out and about on foot, scooter, bike or bus and see if you can find and identify each of the 10 trees. The competition runs to 4 September. Just email your entry to [myjourney@wokingham.gov.uk](mailto:myjourney@wokingham.gov.uk) including your child's name, age and which school they attend.

An example showing  
3 of the trees to be  
found and identified.



<https://www.myjourneywokingham.com/events/identify-the-trees-competition/>

## How can trees reduce air pollution?

Trees planted in the right places can help improve urban air quality by forming a barrier between people and pollutants. Trees absorb pollutant gases (nitrogen dioxide, ammonia, sulphur dioxide and ozone) and filter particulates out of the air by trapping them on their leaves and bark.

## Planting the borough's tree stories

While you're out and about this summer, why not take a snap of your favourite tree for the Borough Council's new tree stories project?

Trees are hugely important, giving us oxygen, storing carbon, habitats for wildlife and providing us with tools and shelter.

We want to hear why particular trees in the borough are important to you. Maybe it's your favourite place to sit with a book? Or where you played as a child? Or it's a particularly old or rare species?

We'd love for you to take a picture, upload it and share why you have chosen that tree. You may even see your photo and story featured on our social media pages and in our tree strategy!

<https://engage.wokingham.gov.uk/en-GB/projects/tree-stories>



## Litter Warden vacancy at the Parish Council

One of our two part time Litter Wardens has left us and we are looking for a replacement. The Litter Wardens collect litter mainly from our roadsides, adding to the litter clearance that the Borough Council undertakes, and helping to keep our Parish even cleaner.

The post involves 15 to 25 hours per month, with the litter picking undertaken at a time to suit the post holder. You will need to be physically fit, and to have your own transport. If you think you might be interested please get in touch by emailing [clerk@finchampstead-pc.gov.uk](mailto:clerk@finchampstead-pc.gov.uk)





## Early birds could catch the prize in cycling challenge

Residents and workplaces across Wokingham borough are urged to make this year's annual **Love to Ride Cycle September** challenge the most successful yet.



[www.lovetoride.net/wokingham](http://www.lovetoride.net/wokingham)

Wokingham Borough Council, whose My Journey active travel team is again supporting the scheme, is calling on at least 1,000 businesses, charities or community groups to saddle up and help the borough to rack up at least 150,000 miles throughout the month.

[www.myjourneywokingham.com](http://www.myjourneywokingham.com)

Anyone can sign up their company and start encouraging colleagues to take part, and the scheme is open to everybody over the age of 13 who lives, works or studies in the borough. A new bike of the winner's choice, worth up to £1,000, is up for grabs in a prize draw for anyone who registers before September 1 – and, in total, there are 700 prizes on offer.

Visit [www.lovetoride.net/uk/prizes](http://www.lovetoride.net/uk/prizes)

Everyone who logs at least one ride of at least 10 minutes a week, whether for work or leisure, will enter a draw to win £4,000 towards a dream holiday and other prizes include coffee gift cards, T-shirts and cycling goodies and World Bicycle Relief Bikes to be awarded to developing communities.

The challenge is fun, friendly and welcoming to all riders, regardless of experience or ability, and offers a little gentle rivalry as people compete to top the local leader board while winning "badges" for their achievements and sharing their photos and stories.

## Do you have an unused bike?

My Journey Wokingham are currently sourcing and providing bikes to Ukrainian refugees in the borough.

They are running low on donated bikes to use for this worthwhile purpose, so are sending out a huge plea for more adult bikes for ladies (small and medium) and men (medium and large).

If you have any not being used in sheds or garages, please get in touch with the team by emailing [myjourney@wokingham.gov.uk](mailto:myjourney@wokingham.gov.uk)



## Update on repairs to The Ridges



In Spring 2021, sections of The Ridges started to collapse. A long-term solution was needed to prevent it from happening again. What followed has been a complex project involving a range of technical disciplines to identify the right solution, considering long term stability, disruption during construction, land availability, value for money and environmental impacts (including tree retention and carbon impacts). The Borough Council has appointed VSL Systems Ltd. to undertake the repair work - this has now started and it is hoped that it will be completed in November 2022 unless delayed by bad weather or anything unexpected being discovered.



## Help us to help you walk and cycle more

We'd like everyone who lives or works in Wokingham borough, or visits regularly, to share their thoughts on proposals to make walking and cycling around it safer and more accessible.

From 11 July to 19 August, the Borough Council is seeking people's views on a draft **Local Cycling and Walking Infrastructure Plan (LCWIP)**, which suggests improvements to help people walk, wheel, scoot or cycle and will be used to apply for funding.



The plan, which will always be open to updates, will outline the most beneficial active travel routes and propose specific measures in places where the community wants them, subject to funding and further consultation.

Increasing cycling and walking can help us tackle some of the most challenging issues we face as a society – improving air quality, combatting climate change, improving health and wellbeing, addressing inequalities and tackling congestion on our roads.

With the increasing cost of fuel, walking and cycling are likely to become more attractive options for local journeys. We want to enable this by providing facilities that are safe, comfortable and inclusive for all.

Please take the opportunity to share your views - the consultation closes on 19 August.

<https://wokinghamboroughlcwip.commonplace.is/>



The Parish Council will be responding to the consultation on the LCWIP. We know that a better cycle route network is a priority for our residents, and are constantly looking for opportunities to improve the network. We are in active discussion with the Borough Council over potential cycle routes between Finchampstead and Wokingham.

## Walk In Or Reach In Thefts During Warm Weather

During spells of warm weather, opportunist thieves may attempt 'walk in' or 'reach in' thefts at properties with insecure doors and windows.

Try to only leave windows open for ventilation when you are in the room and lock them when you leave the house and at night. Window opening restrictors can help you ventilate your home but make sure they cannot be picked and unlocked from the outside.



Do not leave windows open, even on upper floors, if they are next to a porch or flat garage roof which can be used to climb up.

If you are working in your garden, please secure any rear or side access doors. Opportunists will try the door and if unlocked, will enter and quickly search around for handbags or other items to steal. Consider installing CCTV or a video doorbell. Many models will send an alert to your mobile phone when someone steps onto your property.

For further information and crime prevention advice, please visit [www.thamesvalley.police.uk](http://www.thamesvalley.police.uk)



## Thank you for recycling your food waste

According to WRAP (Waste and Resources Action Programme), 70% of food waste in the UK comes from average households. [wrap.org.uk](https://wrap.org.uk)

Recycling your food waste becomes all the more important in helping our environment. Reducing food waste helps slow down global warming.

When we waste food, we also waste all the energy and water it takes to grow, harvest, transport, and package it. If food goes to the landfill and rots, it produces methane – a greenhouse gas which is even more potent than carbon dioxide.

During January to June 2022, more than 3,000 tonnes of food waste was collected in the borough and recycled to become fertilisers and electricity.

This is a significant achievement for all of us - thank you for making this happen.



## What can go in your food caddy

If you have any of these left in your kitchen, please put them in your food caddy:

- All cooked and uncooked food
- Baked food (bread, cakes, pastries)
- Tea bags, loose tea leaves and coffee grounds
- Dairy products (cheese, eggs and eggshells, yoghurts)
- Vegetable peelings, banana skins, apple cores
- Pet food
- Out-of-date food
- Cooking oil in sealed bottles

## What can't go in your food caddy

Some items can't be put in your food caddy because if they get mixed with food waste they may prevent the loads of materials from being recycled:

This includes cling film, wrapping and tin foil; pots, trays; garden waste; pet faeces and litter.

## Some common queries

Some food items are easily found in every kitchen, but you may be unsure of whether they can be recycled. For example:

- Chicken bones: Yes
- Rotten tomatoes: Yes
- Mouldy bread: Yes
- Mussel or clam shells: Yes
- Liquids (eg soup, milk): **No thanks**



Half the food we throw away could be eaten. Find tips, and discover the nation's best left over food recipes at:

<https://www.lovefoodhatewaste.com/recipes>





## Line your caddy with environmentally friendly items

To help tackle the climate emergency, the Borough Council has decided not to supply any more food caddy liners, which are made of non-biodegradable single-use plastic.

Production and disposal of the caddy liners results in greenhouse gas emissions and often ends up polluting our rivers and seas.



Instead of using a single-use plastic bag, you can line your kitchen caddy with a compostable liner, newspapers or any soft plastic bag that can easily be found at home, such as carrier bags, bread bags, cereal bags or fruit and vegetable bags.

You can also instead line the bottom with newspaper or used kitchen paper, emptying it into the outdoor caddy, or not use a liner at all and wash both between uses - using grey water to save on wastage.

We understand from a survey conducted last October that when it comes to waste collections, the most important thing to our residents are the environment benefits.

We've therefore decided to stop supplying more than five million single-use plastic kitchen caddy liners a year and we'd appreciate your support as this is good for the environment.

For the same reason, we have also decided not to include food caddy liners in our annual delivery of blue bin bags to residents from 2023.

This decision will also save money as the cost of providing caddy liners was around £75,000 this year, with the estimated cost for next year just under £120,000 if they were ordered today.

<https://news.wokingham.gov.uk/news/residents-urged-line-food-caddies-environmentally-friendly-alternatives/>



**BASIC FIRST AID & DEFIBRILLATOR**  
**FREE TRAINING**  
THURSDAY 20TH OCTOBER AT 7PM  
THE FBC CENTRE, GORSE RIDE NORTH, FINCHAMPSTEAD

Fantastic opportunity to brush up on your basic first aid skills and learn how to operate one of our **5 community accessible defibrillators** for free!



Acting quickly when someone goes into cardiac arrest is vital, and a defibrillator can make all the difference between life and death. These potentially lifesaving items of equipment are designed to be used by anyone without specific training, but some knowledge is always helpful.

➤ The 2-hour training session will include incident management, assessing the unresponsive casualty (adult and children), the recovery position, resuscitation and use of the defibrillator.

➤ Choking, bleeding, head injuries & seizures will also be covered.



Please let us know if you would like to attend:  
0118 908 8164 [clerk@finchampstead-pc.gov.uk](mailto:clerk@finchampstead-pc.gov.uk)



Finchampstead  
Parish Council





## Some of our recent activities

Here are just a few of the things we have been up to over the last month or so. We:

- Held a Main Council meeting and meetings of the Rights of Way and the Finance & General Management Committees. <https://www.finchampstead-pc.gov.uk/meetings/meeting-minutes>
- Attended meetings of the Gorse Ride Steering Group (Cllr Steve Bowers chairs the Group) and the Arborfield Community Liaison Group (Cllr Andy Pearce represents the Parish Council)
- Completed the full annual allotment inspection with the Allotment Association - lots of interim inspections also take place to check the condition of the site and how tenants are getting on!
- Let an allotment plot and received two further applications
- Met WBC to discuss plans to improve the lakeside area at the California Country Park
- Responded to a WBC questionnaire on Gypsy and Traveller accommodation
- Visited the Gorse Ride Schools to discuss their proposals for new play equipment and outdoor shelters
- Visited Footpath 1 with a Ramblers representative to look at a proposed informal alternative route for part of the path - this was approved and we have also agreed to fund one of the kissing gates to be installed on the path
- Signed up several people for a first aid / defibrillator training session we have organised for 20 October (let us know if you would like to attend).



The Finchampstead Future Group, made up of Parish Councillors and local volunteers, has completed the final draft of the **Finchampstead Neighbourhood Development Plan.**



[www.finchampstead-pc.gov.uk/community-projects/neighbourhood-development-plan/documents](http://www.finchampstead-pc.gov.uk/community-projects/neighbourhood-development-plan/documents)

*Staff are now working in our office at the FBC Centre on certain days, while working from home on other days. Some of the staff are part time. If you would like to see a member of staff please get in touch to ensure we will be available when you wish to visit.*

*Some of our meetings are now held in person, and others by video conferencing. Members of the public are welcome to attend a Main Council or Committee meeting - please contact us if you would like to do so.*

## **FINCHAMPSTEAD PARISH COUNCIL**

PARISH OFFICE, FBC CENTRE, GORSE RIDE NORTH, FINCHAMPSTEAD RG40 4ES  
Tel: 0118 908 8164 email: [clerk@finchampstead-pc.gov.uk](mailto:clerk@finchampstead-pc.gov.uk) [www.finchampstead-pc.gov.uk](http://www.finchampstead-pc.gov.uk)



**To subscribe or unsubscribe to this newsletter and other Parish Council information please contact us at the address above or follow the link on our website.**